

MONTHLY MEMBERSHIP PROGRESS REPORT

LOCATION INDIA

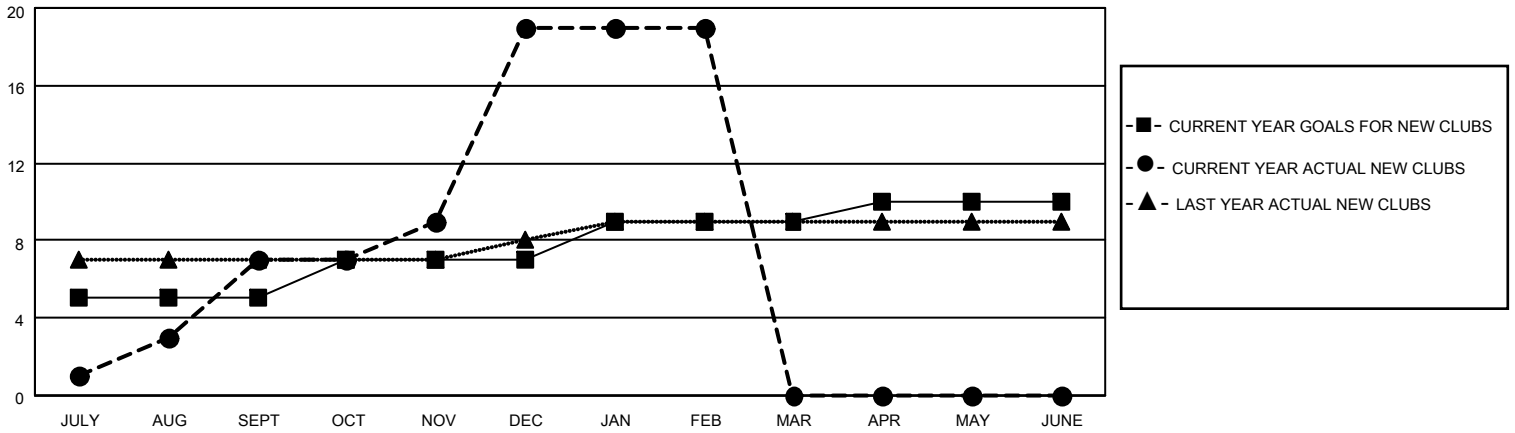
District 322C1

Results as of: 2/28/2021

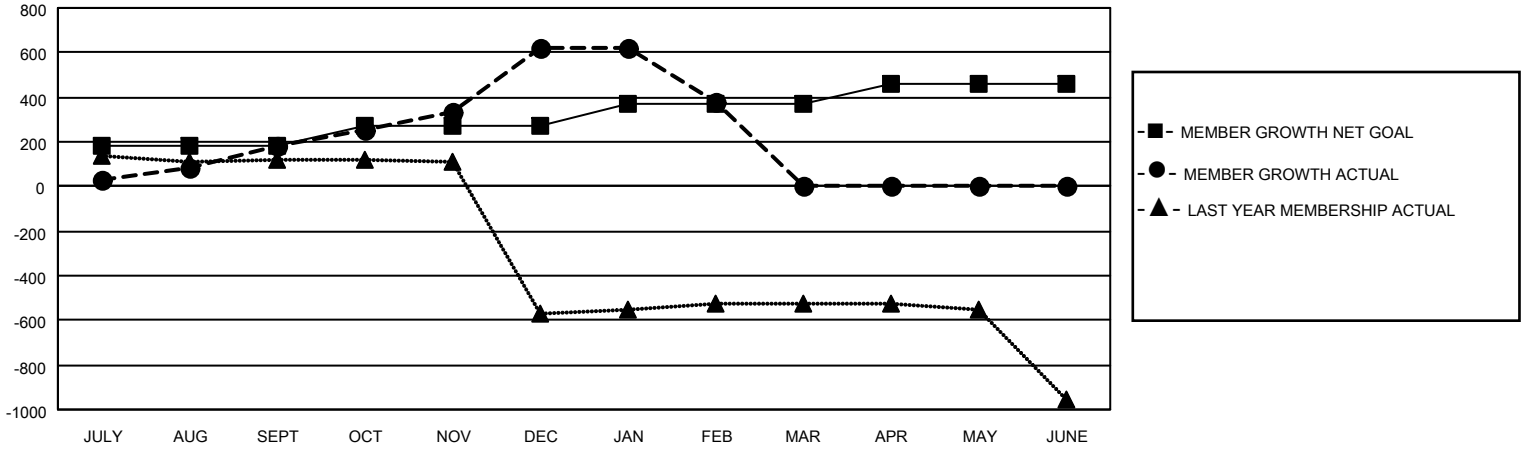
Clubs			
RESULTS FOR 2020-2021			
QUARTER	NEW CLUB GOAL	NEW CLUBS	DROPPED CLUBS
JULY/AUG/SEPT	5	7	0
OCT/NOV/DEC	2	12	0
JAN/FEB/MAR	2	0	16
APR/MAY/JUNE	1	0	0

Members			
RESULTS FOR 2020-2021			
QUARTER	MEMBER GROWTH NET GOAL	MEMBER GROWTH ACTUAL	DROPPED MEMBERS ACTUAL (including transfers)
JULY/AUG/SEPT	179	252	57
OCT/NOV/DEC	93	588	139
JAN/FEB/MAR	102	14	255
APR/MAY/JUNE	88	0	0

GOALS AND ACTUAL NEW CLUBS CUMULATIVE



GOALS AND ACTUAL MEMBERS CUMULATIVE



DROPPED CLUBS: 16

75 CLUBS OF 134 ADDED 1 OR MORE NEW MEMBERS

GENDER DISTRIBUTION

MALE 2,603 (75.87%)
 FEMALE 828 (24.13%)

DROPPED MEMBERS

[CLICK HERE FOR CUMULATIVE MEMBERSHIP DATA](#)

DECEASED	20
CLUB CANCELLED	247
OTHER	184
TOTAL	451

TOTAL FAMILY UNIT MEMBERS	1,879
FAMILY MEMBERS PAYING HALF DUES	1,127